

CLAMP RING 1/2"

ART. NO. 900075

GENERAL



KEOFITT has the widest selection of spare parts and accessories to complete your sampling system

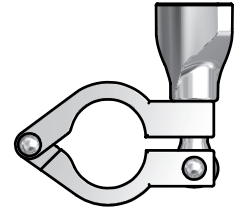


To be used with gasket art. no. 900074

FEATURES



Installation: Mini clamp connection



CERTIFICATION

TECHNICAL DATA

Material (product contact)

Material (without product contact)

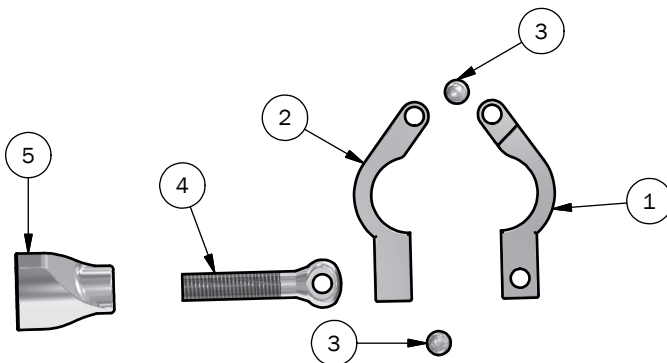
· Steel parts AISI 304 (1.4301)

Pressure & Temperature

· Pressure -
· Temperature -

Net Weight

· Kg/lbs 0,129 kg / 0,28 lbs



PART LIST

| ITEM | QTY | PART NUMBER | TITLE | MATERIAL |
|------|-----|-------------|---------------------------------------|----------------------|
| 1 | 1 | 900075-2 | CLAMP_1 FOR MINI CLAMP 900075 | Aisi 304L / W 1.4301 |
| 2 | 1 | 900075-1 | CLAMP_2 FOR MINI CLAMP 900075 | Aisi 304L / W 1.4301 |
| 3 | 2 | 900075-5 | PIN FOR MINI CLAMP 900075 | Aisi 304L / W 1.4301 |
| 4 | 1 | 900075-4 | TIGHTNING SCREW FOR MINI CLAMP 900075 | Aisi 304L / W 1.4301 |
| 5 | 1 | 900075-3 | FINGER NUT FOR MINI CLAMP 900075 | Aisi 304L / W 1.4301 |