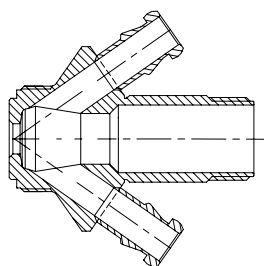
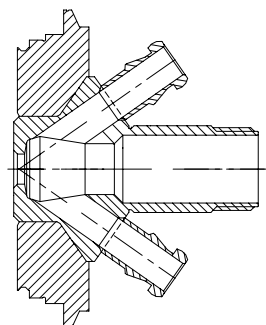


Data sheet: 900045
Item no. 900045
W9 Adapter with ISO female luer conus for syringe
W9 valves with Keofitt hose piece

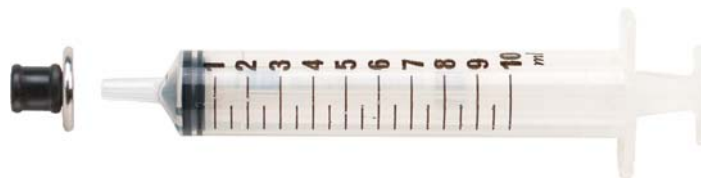
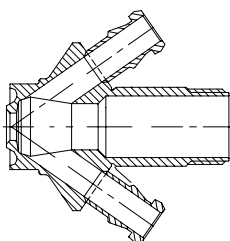
Valve body Type S
Item no.: 850031



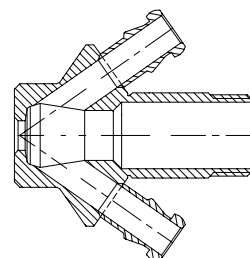
Valve body Type V
Item no.: 850009



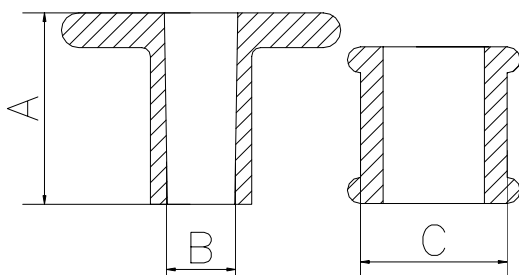
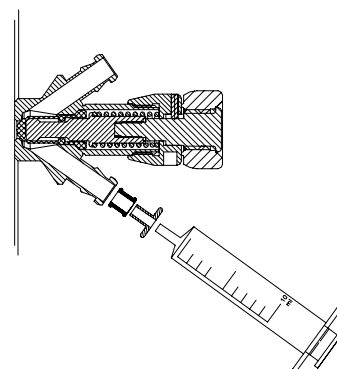
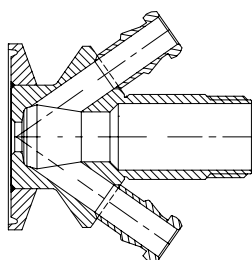
Valve body Type P
Item no.: 850011



Valve body Type T
Item no.: 850001



Valve body Type C
Item no.: 850021



Where to use :

W9 Keofitt hose piece.

Material:

Steel parts: AISI 316 (1.4404)

Rubber parts: Black EPDM

Working temperature depends on choice of valve head.

Working pressure depends on choice of valve head.

Key measurements

Drawing part A: 11 mm. 0.43 In.

Drawing part B: Ø4 mm. Ø0.16 In.

Drawing part C: Ø8.4 mm. Ø0.32 In.

Net weight: 0.005 kg./pc 0.01lb