

MEMBRANE REFLEX PTFE

ART. NO. 880055

GENERAL



KEOFITT has the widest selection of spare parts and accessories to complete your sampling system



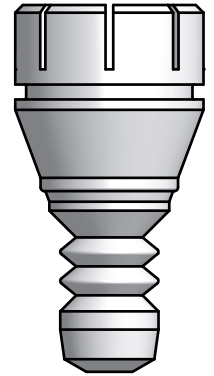
Compatible with all KEOFIT Reflex valve heads for PTFE membrane



The patented membrane design is an essential part of the hygienic design of the KEOFIT sampling valves



It allows for optimal exposure to CIP and SIP media while also integrating the capacity to remove the membrane from the valve body without the use of tools



FEATURES



Compatible with all KEOFIT Reflex valve heads for PTFE membrane

CERTIFICATION*

FDA · USP · EU 1935/2004

TECHNICAL DATA

Material:	PTFE (TFM 1600 - white)
Range of temperature in dry atmospheric air:	-200° - +200°C / -328° - +392°
Ball hardness (N/mm2):	29
Tensile strength (DIN53455 - N/mm2):	35
Elongation at break (DIN53455 - %):	350
Density (DIN 53479 - g/cm3):	2,17
Shore D (DIN 53505):	57
Thermal conductivity (W/m.k DIN 52612):	0,22
Expansion coefficient (DIN 53752 [K^-1]):	12-17x10^-5
Flammability:	Inflammable UL 94
Chemical resistance:	Is not attacked by common chemicals with the exception of strongly oxidising acids

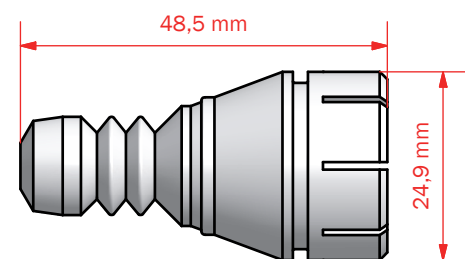
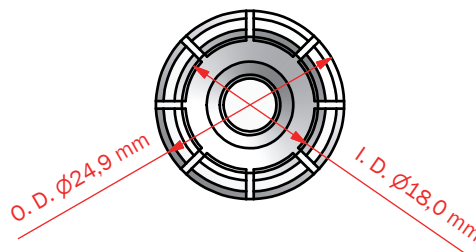
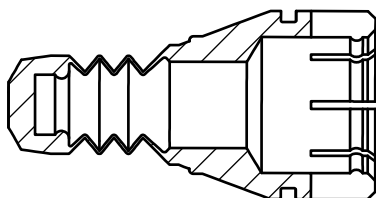
LIFE TIME

Average life time of a PTFE membrane is 12 months - to be determined by user.

Temp. max.:	1 - 150°C / 34 - 302° F
Steam pressure:	0 - 2 bar (g) / 0 - 29 psi (g)
Process pressure:	0 - 6 bar (g) / 0 - 87 psi (g)
CIP:	Nho4<3% or similar

Net Weight

· Kg/lbs 0,014 kg / 0,03 lbs



MEMBRANES REFLEX

Silicone



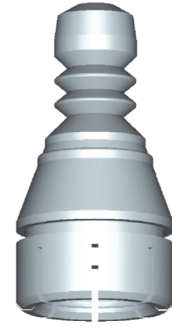
880051

EPDM



880052

PTFE



880055

Part of valve head

880001	880001E	885501
880003	880003E	885503
880005	880005E	885505
880006	880006E	885506
880007	880007E	885507
880008	880008E	885508
880009	880009E	885509
880010	880010E	885510
880011	880011E	885511
880017	880017E	885517
880021	880021E	885521
880022	880022E	885522
880027	880027E	885527