

10 PACK MEMBRANE REFLEX SILICONE

ART. NO. 880051

GENERAL



KEOFITT has the widest selection of spare parts and accessories to complete your sampling system



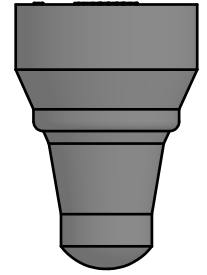
Compatible with all KEOFITT Reflex valve heads for silicone & EPDM membrane



The patented membrane design is an essential part of the hygienic design of the KEOFITT sampling valves



It allows for optimal exposure to CIP and SIP media while also integrating the capacity to remove the membrane from the valve body without the use of tools



FEATURES



Compatible with all KEOFITT Reflex valve heads for silicone & EPDM membrane

CERTIFICATION*

FDA · USP · EU 1935/2004

TECHNICAL DATA

Type:	Silicone (QBF-65 - grey)
Hardness (°Sha):	70 ±3
Tensile strength (MPa):	Min. 8,5
Elongation at break (%):	550 ±80
Density (g/cm ³):	1,19 ±0,01
Range of temperature in dry atmospheric air (°C/°F):	-60° - +200°C / -140° - +392°
Compression set, DIN 53517, 24h/175°C (%):	Max. 25
Wear resistance:	Less suitable
Tear resistance:	Very good
Resistance to weather and ozone:	Excellent
Resistance to hydrolysis (water and steam):	Good
Resistance to chemicals (acids/bases):	Suitable
Resistance to mineral oil and gas:	Less suitable
Impermeability to air and gasses:	Not suitable

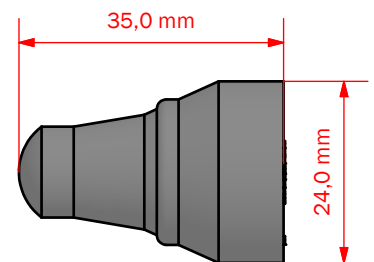
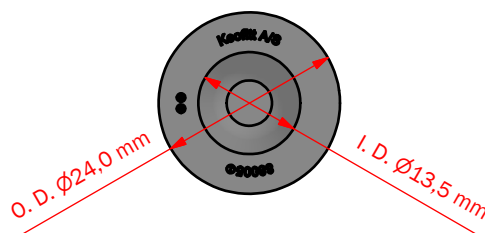
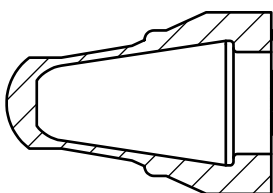
LIFE TIME

Average life time of an Silicone membrane is 2-3 months - to be determined by user.

SIP/CIP temp. max.:	121°C / 250°F
Steam pressure:	0 - 2 bar (g) / 0 - 29 psi (g)
Process pressure:	0 - 6 bar (g) / 0 - 87 psi (g)
CIP:	Nho4<3% or similar

Net Weight

· Kg/lbs	0,006 kg / 0,01 lbs
----------	---------------------



MEMBRANES REFLEX

Silicone



880051

EPDM



880052

PTFE



880055

Part of valve head

880001	880001E	885501
880003	880003E	885503
880005	880005E	885505
880006	880006E	885506
880007	880007E	885507
880008	880008E	885508
880009	880009E	885509
880010	880010E	885510
880011	880011E	885511
880017	880017E	885517
880021	880021E	885521
880022	880022E	885522
880027	880027E	885527