



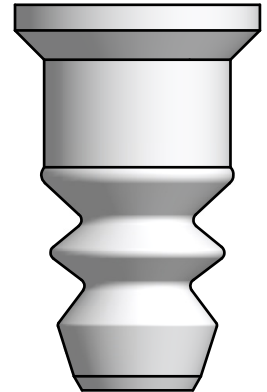


## MEMBRANE W15 PTFE


ART. NO. 860055

### GENERAL

-  KEOFITT has the widest selection of spare parts and accessories to complete your sampling system
-  Compatible with KEOFITT W15 valve head
-  The patented membrane design is an essential part of the hygienic design of the KEOFITT sampling valves
-  It allows for optimal exposure to CIP and SIP media while also integrating the capacity to remove the membrane from the valve body without the use of tools



### FEATURES

-  Compatible with KEOFITT W15 valve head

### CERTIFICATION\*

FDA · USP · EU 1935/2004

### TECHNICAL DATA

Material:	PTFE (TFM 1600 - white)
Range of temperature in dry atmospheric air:	-200° - +200°C / -328° - +392°
Ball hardness (N/mm <sup>2</sup> ):	29
Tensile strength (DIN53455 - N/mm <sup>2</sup> ):	35
Elongation at break (DIN53455 - %):	350
Density (DIN 53479 - g/cm <sup>3</sup> ):	2,17
Shore D (DIN 53505):	57
Thermal conductivity (W/m.k DIN 52612):	0,22
Expansion coefficient (DIN 53752 [K <sup>-1</sup> ]):	12-17x10 <sup>-5</sup>
Flammability:	Inflammable UL 94
Chemical resistance:	Is not attacked by common chemicals with the exception of strongly oxidising acids

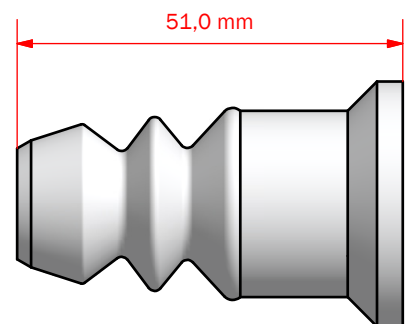
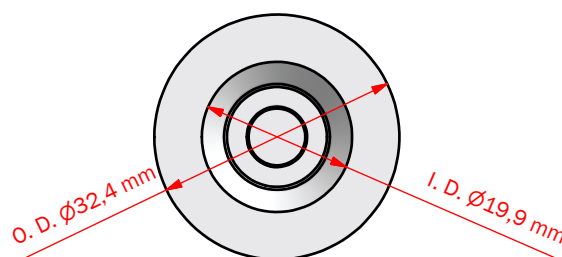
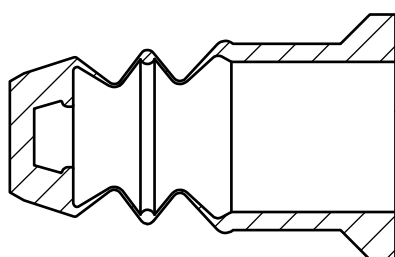
### SERVICE LIFE

Average service life of a PTFE membrane is 12 months - actual life expectancy must be experimentally determined by the user.

Temp. max.:	1 - 150°C / 34 - 302° F
Steam pressure:	0 - 2 bar (g) / 0 - 29 psi (g)
Process pressure:	0 - 6 bar (g) / 0 - 87 psi (g)
CIP:	NaOH or similar

### Net Weight

· Kg/lbs 0,017 kg / 0,04 lbs



# MEMBRANES W15

Silicone	EPDM	PTFE
<i>Not available</i>	<i>Not available</i>	 860055

Part of valve head		
		865541
		865544

Part of spare part kit		
		778641
		778644