

MEMBRANE W9/SIMPLEX PTFE

ART. NO. 850055

GENERAL



KEOFITT has the widest selection of spare parts and accessories to complete your sampling system



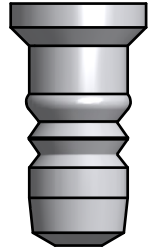
Compatible with all KEOFIT W9 & Simplex valve heads for PTFE membrane



The patented membrane design is an essential part of the hygienic design of the KEOFIT sampling valves



It allows for optimal exposure to CIP and SIP media while also integrating the capacity to remove the membrane from the valve body without the use of tools



FEATURES



Compatible with all KEOFIT W9 & Simplex valve heads for PTFE membrane

CERTIFICATION*

FDA · USP · EU 1935/2004

TECHNICAL DATA

Material:	PTFE (TFM 1600 - white)
Range of temperature in dry atmospheric air:	-200° - +200°C / -328° - +392°
Ball hardness (N/mm2):	29
Tensile strength (DIN53455 - N/mm2):	35
Elongation at break (DIN53455 - %):	350
Density (DIN 53479 - g/cm3):	2,17
Shore D (DIN 53505):	57
Thermal conductivity (W/m.k DIN 52612):	0,22
Expansion coefficient (DIN 53752 [K^-1]):	12-17x10^-5
Flammability:	Inflammable UL 94
Chemical resistance:	Is not attacked by common chemicals with the exception of strongly oxidising acids

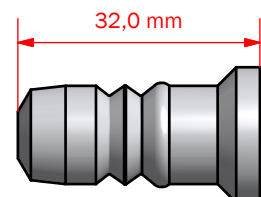
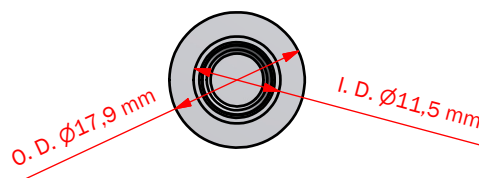
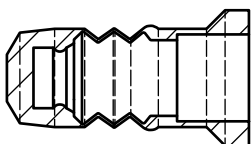
SERVICE LIFE

Average service life of a PTFE membrane is 12 months - actual life expectancy must be experimentally determined by the user.

Temp. max.:	1 - 150°C / 34 - 302° F
Steam pressure:	0 - 2 bar (g) / 0 - 29 psi (g)
Process pressure:	0 - 6 bar (g) / 0 - 87 psi (g)
CIP:	NaOH or similar

Net Weight

· Kg/lbs 0,004 kg / 0,01 lbs



MEMBRANES W9 & SIMPLEX

Silicone



600051

EPDM



600052

PTFE



850055

Part of valve head

600041	600041E	855541
600042	600042E	855542
600043	600043E	855543
600044	600044E	855544
600047	600047E	855547
830141	830141EPDM	830141PTFE
830144	830144EPDM	830144PTFE
831141	831141EPDM	831141PTFE
831144	831144EPDM	831144PTFE
832141	832141EPDM	832141PTFE
832144	832144EPDM	832144PTFE
832241	832241EPDM	832241PTFE
832244	832244EPDM	832244PTFE

Part of spare part kit

776041	776041EPDM	778541
776044	776044EPDM	778544
778301	778301EPDM	778301PTFE
778344	778344EPDM	778344PTFE