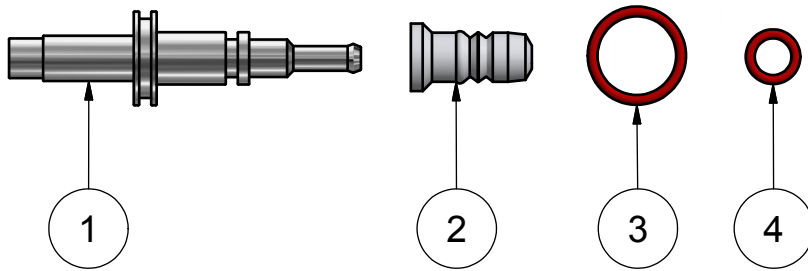


**KIT FOR SIMPLEX TYPE N**

**ART. NO. 834401PTFE**



**PART LIST**

ITEM	QTY	PART NUMBER	TITLE	MATERIAL
1	1	830345	STEM FOR SIMPLEX VALVE HEAD TYPE N	AISI 316L (W1.4404)
2	1	850055	MEMBRANE W9/SIMPLEX PTFE	PTFE White (TFM 1600)
3	1	300119-1	O-RING 20,24 x 2,62 FDA	Silicone (red)
4	1	800830-1	O-RING 10,3 x 2,4 SILICONE FDA	Silicone (red)

Net Weight: 0,090 kg /0,19 lbs