

IN/OUTLET MINI TRI-CLAMP

ART. NO. 830121

GENERAL



KEOFITT has the widest selection of spare parts and accessories to complete your sampling system



Compatible with all KEOFITT sampling valves with threaded inlet/outlet

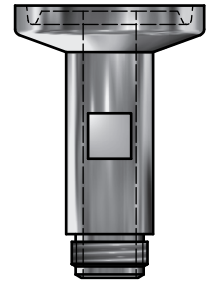
FEATURES



Installation: Threaded connection



Inlet / Outlet: Mini Tri-Clamp



CERTIFICATION

- 3.1 Material Certificate

TECHNICAL DATA

Material (product contact)

-

Material (without product contact)

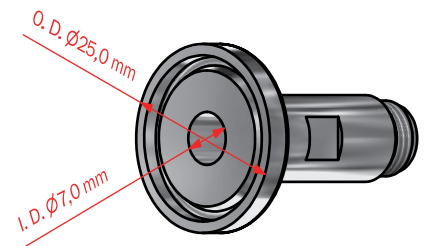
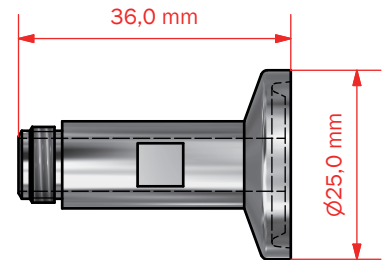
- Steel parts AISI 316L (1.4404)

Surface Treatment

- Outside Electropolished Ra <= 1.2 µm
- Inside & process Electropolished Ra <= 0.5 µm

Net Weight

- Kg/lbs 0.029 kg /0,06 lbs



PART LIST

ITEM	QTY	PART NUMBER	TITLE	MATERIAL
1	1	830121	IN/OUTLET MINI TRI-CLAMP	AISI 316L (W1.4404)