

## QUICK COUPLING W9 / TC

ART. NO. 800083

### GENERAL



KEOFITT has the widest selection of spare parts and accessories to complete your sampling system.



Compatible with all KEOFIT sampling valves

### FEATURES



Connection: W9 hose piece in-/outlets



For mini tri-clamp

### CERTIFICATION

· 3.1 Material Certificate · O-ring: FDA

### TECHNICAL DATA

#### Material (product contact)

· Steel parts                      AISI 316L (1.4404)  
· O-ring                              Silicone

#### Material (without product contact)

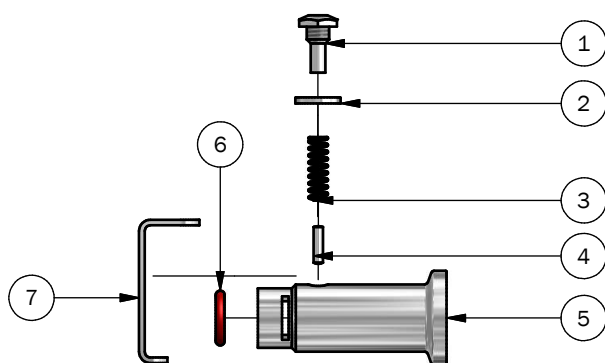
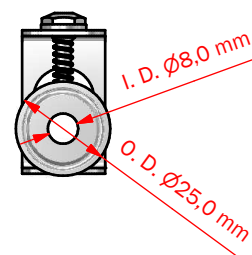
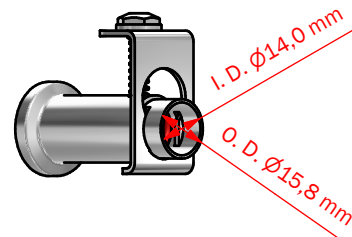
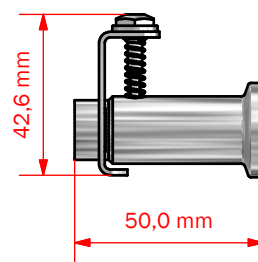
· Steel parts                      AISI 316L (1.4404)

#### Pressure & Temperature

· Pressure                            0 - 2 bar (g) / 0 - 29 psi (g)  
· Temperature                      1 - 130° C / 34 - 266° F

#### Net Weight

· Kg/lbs                                0,085 kg / 0,19 lbs



### PART LIST

ITEM	QTY	PART NUMBER	TITLE	MATERIAL
1	1	800180	Screw for quick coupling	Aisi 316 L / W. 1.4404
2	1	400831	Washer $\varnothing$ 6,25/11,65	Aisi 316 L / W. 1.4404
3	1	800480	Spring	Aisi 316 L / W. 1.4404
4	1	800187	Taper pin $\varnothing$ 2,5x10,5	Aisi 316 L / W. 1.4404
5	1	800383	Quick coupling W9 with mini tri clamp	Aisi 316 L / W. 1.4404
6	1	800830-1	O-RING 10,3 x 2,4 SILICONE FDA	Silicone (red)
7	1	800181	Clip for quick coupling W9	Aisi 316 L / W. 1.4404