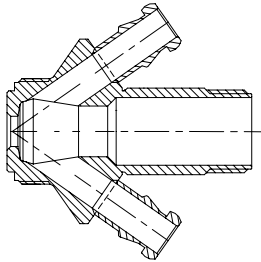
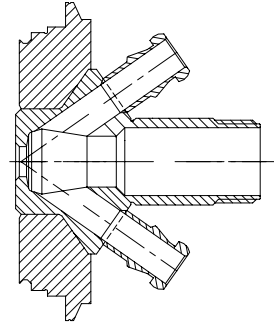


**Data sheet: 800071**  
**Item no. 800071**  
**W9 Quick release tube**  
**fitting for 10x1 PTFE tube**  
**(incl. ref. 600073)**

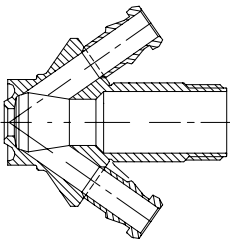
Valve body Type S  
Item no.: 850031



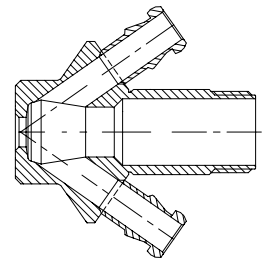
Valve body Type V  
Item no.: 850009



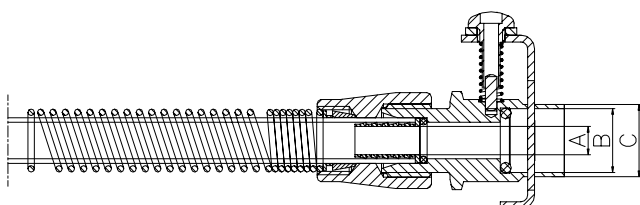
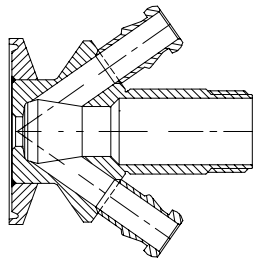
Valve body Type P  
Item no.: 850011



Valve body Type T  
Item no.: 850001



Valve body Type C  
Item no.: 850021



Where to use:	With W9 hose piece and PTFE tube size 10x1	
Material:		
Steel parts:	AISI 316L	(1.4404)
Spring:	AISI 304	
O-ring:	Silicone	
Key measurements		
Drawing part A:	Ø8 mm.	Ø0.31 In.
Drawing part B:	Ø14 mm.	Ø0.55 In.
Drawing part C:	Ø15.8 mm.	Ø0.62 In.
Net weight:	0.063 kg./pc	0.14lb
Working Pressure:	0-10 bar(g)	0-145 psi(g)
Working temperature depends on choice of valve head.		
Tube is available in all lengths.		