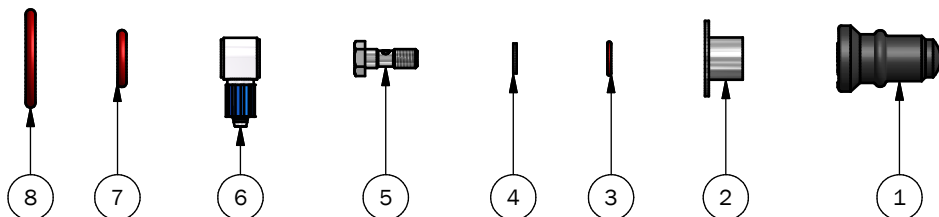


PARTS FOR SIMPLEX TYPE N 01/11/21/22

ART. NO. 778344EPDM

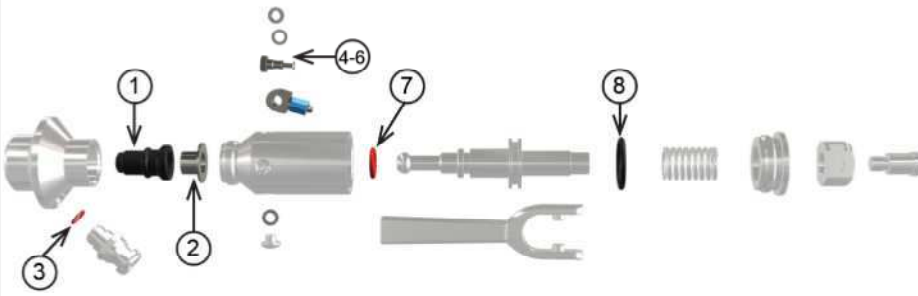


PART LIST

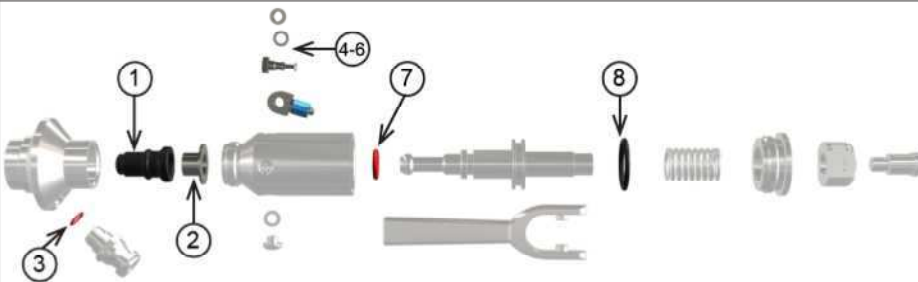
ITEM	QTY	PART NUMBER	TITLE	MATERIAL
1	1	600052	10 PACK MEMBRANE W9 EPDM, BLACK	EPDM (black)
2	1	830149	BUSHING FOR SIMPLEX	AISI 303 / 1.4305
3	1	830825	10 PACK O-RING 7,00x1,00 SILICONE (FDA)	Silicone (red)
4	1	550184	10 PACK O-RING FESTO SCREW	Rubber
5	1	550170	WATER GAUGE - SCREW M5X16 (FESTO MODEL)	Aisi 316 L / W. 1.4404
6	1	600839	SWIVEL ELBOW FOR AIRCYLINDER W6 + M4	
7	1	800830	10 PACK O-RING 10,3 x 2,4 SILICONE FDA	Silicone (red)
8	1	300119	10 PACK O-RING 20,24 x 2,62 FDA	Silicone (red)

SPARE PART KIT 778344EPDM FOR:

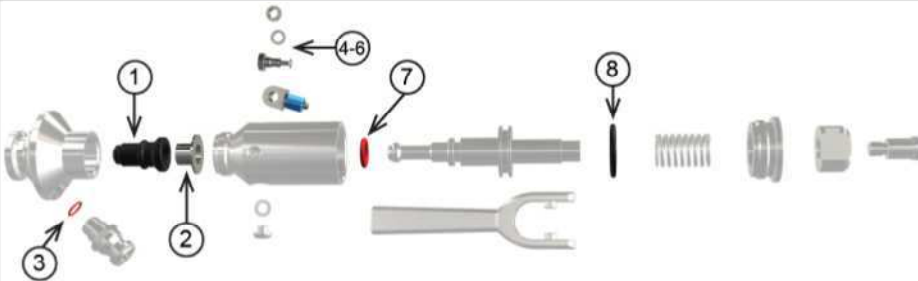
830144EPDM SIMPLEX VALVE TYPE T/N, EPDM



831144EPDM SIMPLEX VALVE TYPE P/N, EPDM



832144EPDM SIMPLEX VALVE TYPE C 1/2"/N, EPDM



832244EPDM SIMPLEX VALVE TYPE C1"/N, EPDM

