

INSERT/BACK FERRULE/FRONT FERRULE 8/10

ART. NO. 600073

GENERAL



KEOFITT has the widest selection of spare parts and accessories to complete your sampling system

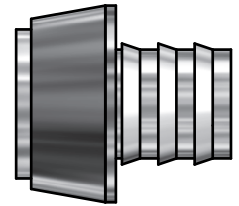


To be used with PTFE tube 10/8 mm

FEATURES



Fitting for 8/10 PTFE tube



CERTIFICATION

TECHNICAL DATA

Materials

· Steel parts AISI 316L (1.4404)

Surface

· Outside Electropolished
· Inside Ra <= 0.5 µm (wetted surfaces only)

Pressure & Temperature

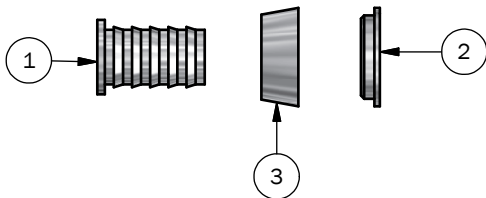
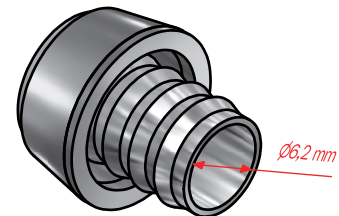
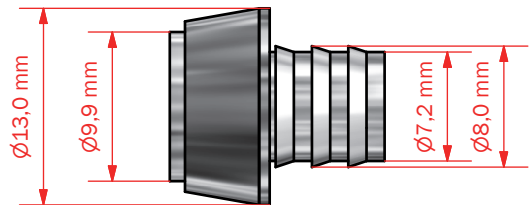
· Pressure NOT APPLICABLE
· Temperature NOT APPLICABLE

Net Weight

· Kg/lbs 0,004 kg / 0,01 lbs

Spareparts

- NOT APPLICABLE



PART LIST

ITEM	QTY	PART NUMBER	TITLE	MATERIAL
1	1	600073-1	INSERT	AISI 316L (W1.4404)
2	1	600073-2	FRONT FERRULE	AISI 316L (W1.4404)
3	1	600073-3	BACK FERRULE	AISI 316L (W1.4404)