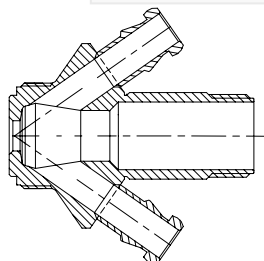
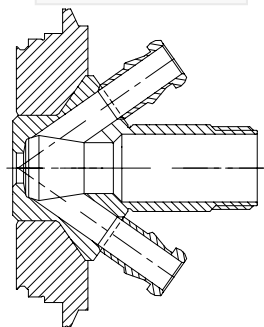


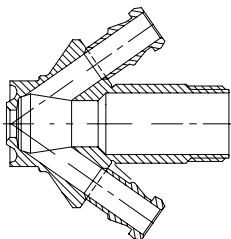
Valve body Type S
Item no.: 850031



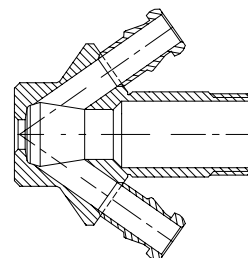
Valve body Type V
Item no.: 850009



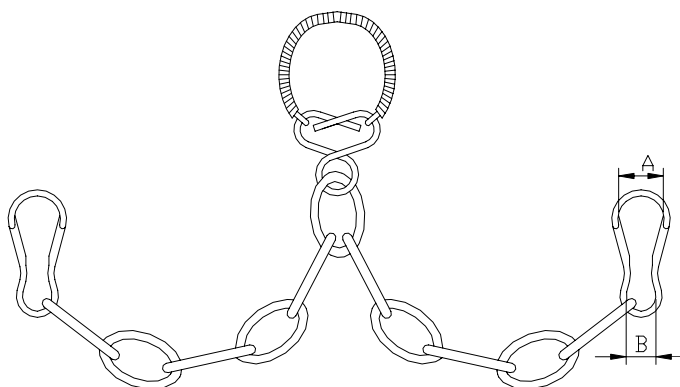
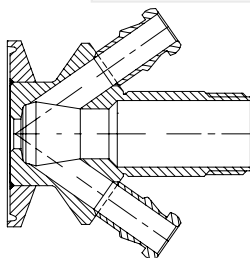
Valve body Type P
Item no.: 850011



Valve body Type T
Item no.: 850001



Valve body Type C
Item no.: 850021



Where to use :	With W9 valves.	
Material:	AISI 303	
Working Pressure depends on choice of valve head.		
Working temperature depends on choice of valve head.		
Key measurements		
Drawing part A:	Ø7.2 mm.	Ø0.28 In.
Drawing part B:	Ø5 mm.	Ø0.2 In.
Net weight:	0.01 kg./pc	0.02lb