

## QC M4 F/ HOSE I.D. 3,1 MM

ART. NO. 40082

### GENERAL



KEOFITT has the widest selection of spare parts and accessories to complete your sampling system



Fitting for ID 3,1 mm hose

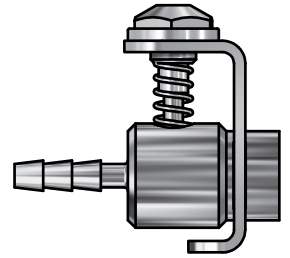
### FEATURES



Connection: M4 hose piece



Outlet: Fitting for I.D. 3,1 mm hose



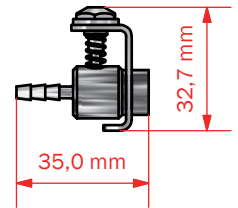
### CERTIFICATION

· QC: 3.1 Material Cert. · O-ring: FDA

### TECHNICAL DATA

#### Material (product contact)

- -



#### Material (without product contact)

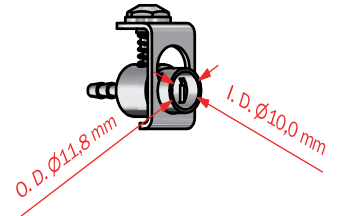
· Steel parts                      AISI 316L (1.4404)  
· O-ring                              Silicone

#### Pressure & Temperature

· Pressure                              Working pressure depends on choice of valve head  
· Temperature                        Working temp. depends on choice of valve head

#### Net Weight

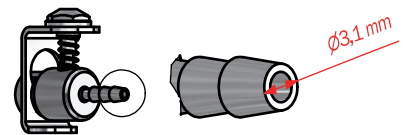
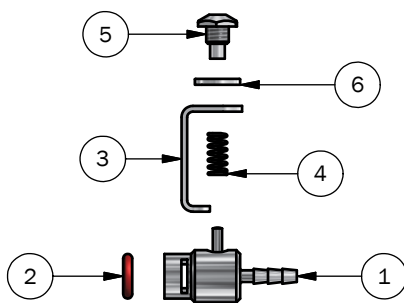
· Kg/lbs                                0,025 kg /0,06 lbs



#### Spareparts

400830                                O-ring

-  
-



### PART LIST

ITEM	QTY	PART NUMBER	TITLE	MATERIAL
1	1	400182	QUICK COUPLING Ø2 I.D. BARB	AISI 316L (W1.4404)
2	1	400830	10 PACK O-RING 5,3 x 2,4 SILICONE FDA	Silicone (red)
3	1	400181	CLIP FOR QUICK COUPLING	AISI 316L (W1.4404)
4	1	400480	SPRING FOR QUICK COUPLING M4	AISI 316L (W1.4404)
5	1	400188	SCREW FOR QUICK COUPLING M4	AISI 316L (W1.4404)
6	1	400831	WASHER FOR QUICK COUPLING M4/W9	AISI 316L (W1.4404)