

# INSERT/BACK FERRULE/FRONT FERRULE 6/8

ART. NO. 400073

## GENERAL



KEOFITT has the widest selection of spare parts and accessories to complete your sampling system

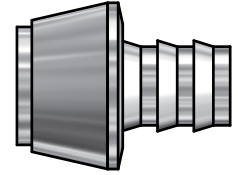


To be used with PTFE tube 6/8 mm

## FEATURES



Fitting for 6/8 PTFE tube



## CERTIFICATION

## TECHNICAL DATA

### Materials

· Steel parts                      AISI 316L (1.4404)

### Surface

· Outside                              Electropolished  
· Inside                                Ra <= 0.5 µm (wetted surfaces only)

### Pressure & Temperature

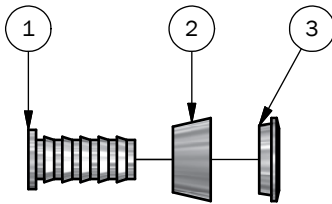
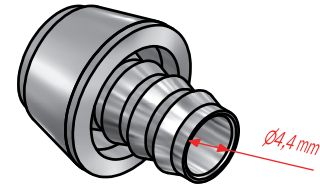
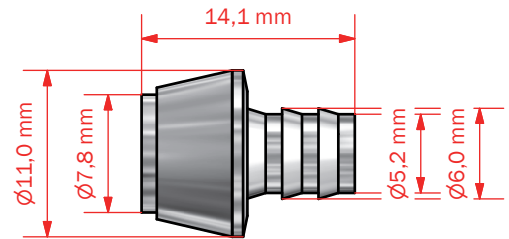
· Pressure                            NOT APPLICABLE  
· Temperature                      NOT APPLICABLE

### Net Weight

· Kg/lbs                                0,003 kg / 0,01 lbs

### Spareparts

-                                            NOT APPLICABLE



## PART LIST

ITEM	QTY	PART NUMBER	TITLE	MATERIAL
1	1	400073-1	INSERT	AISI 316L (W1.4404)
2	1	400073-3	BACK FERRULE	AISI 316L (W1.4404)
3	1	400073-2	FRONT FERRULE	AISI 316L (W1.4404)