

QUICK COUPLING M4 FOR PTFE

ART. NO. 400071

GENERAL



KEOFITT has the widest selection of spare parts and accessories to complete your sampling system



Fitting for 8x1 PTFE tube

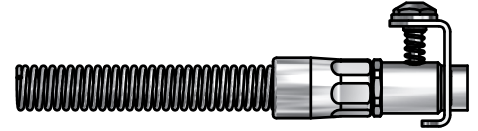
FEATURES



Connection: M4 hose piece



Outlet: Fitting for 8x1 PTFE tube



CERTIFICATION

· QC: 3.1 Material Cert. · O-ring: FDA

TECHNICAL DATA

Material (product contact)

-

Material (without product contact)

· Steel parts AISI 316L (1.4404)
· O-ring Silicone

Pressure & Temperature

· Pressure Working pressure depends on choice of valve head
· Temperature Working temp. depends on choice of valve head

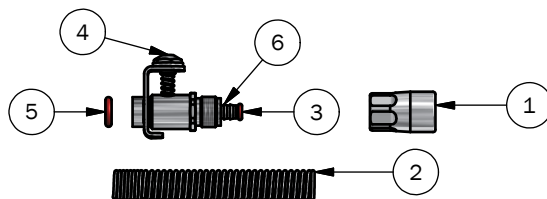
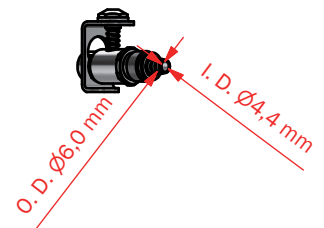
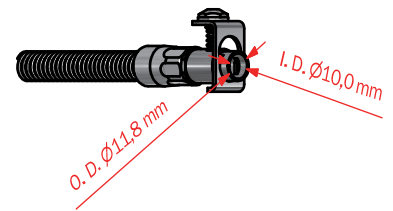
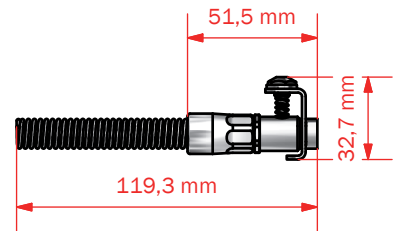
Net Weight

· Kg/lbs 0,068 kg /0,15 lbs

Spareparts

400830 O-ring

-
-



PART LIST

ITEM	QTY	PART NUMBER	TITLE	MATERIAL
1	1	400077	HEX NUT M13,5 X 1,5 / M12 x 0,75	AISI 316L (W1.4404)
2	1	400078	SPRING FOR RELIEF OF PTFE TUBE 6/8	AISI 316L (W1.4404)
3	1	900820	10 PACK O-RING 5,1x1,6 SILICONE (FDA)	Silicone (red)
4	1	400171	TUBE FITTING FOR PTFE M4	AISI 316L (W1.4404)
5	1	400830	10 PACK O-RING 5,3 x 2,4 SILICONE FDA	Silicone (red)
6	1	400073	INSERT/BACK FERRULE/Front FERRULE 6/8	