

10 PACK MEMBRANE M4 EPDM, BLACK

ART. NO. 400052

GENERAL



KEOFITT has the widest selection of spare parts and accessories to complete your sampling system



Compatible with all KEOFIT M4 valve heads for silicone & EPDM membrane



The patented membrane design is an essential part of the hygienic design of the KEOFIT sampling valves



It allows for optimal exposure to CIP and SIP media while also integrating the capacity to remove the membrane from the valve body without the use of tools



FEATURES



Compatible with all KEOFIT M4 valve heads for silicone & EPDM membrane

CERTIFICATION*

FDA · USP · EU 1935/2004

TECHNICAL DATA

Type:	EPDM (EPL-60 - black)
Hardness (°Sha):	61 ±3
Tensile strength (MPa):	Min. 16
Elongation at break (%):	400 ±50
Density (g/cm ³):	1,12 ±0,01
Range of temperature in dry atmospheric air (°C/°F):	-40° - +140°C / -40° - +284° F
Compression set, DIN 53517, 24h/175°C (%):	Min. 16
Wear resistance:	Very good
Tear resistance:	Very good
Resistance to Weather and Ozone:	Excellent
Resistance to Hydrolysis (water and steam):	Excellent
Resistance to Chemicals (acids/bases):	Very good
Resistance to mineral oil and gas:	Not suitable
Impermeability to air and gasses:	Less suitable

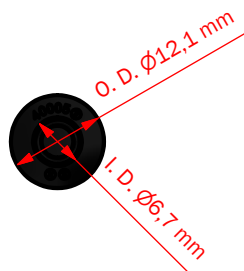
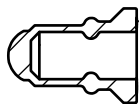
SERVICE LIFE

Average service life of an EPDM membrane is 2-3 months - actual life expectancy must be experimentally determined by the user.

Temp. max.:	121°C / 250°F
Steam pressure:	0 - 2 bar (g) / 0 - 29 psi (g)
Process pressure:	0 - 6 bar (g) / 0 - 87 psi (g)
CIP:	NaOH or similar
Samplex:	1-5 a day

Net Weight

· Kg/lbs 0,010 kg / 0,02 lbs



MEMBRANES M 4

Silicone



400051

EPDM



400052

PTFE



400055

Part of valve head

400041	400041E	405541
400042	400042E	405542
400043	400043E	405543
400044	400044E	405544
400047	400047E	405547

Part of spare part kit

774041	774041EPDM	774041PTFE
774044	774044EPDM	774044PTFE