

## 10 PACK MEMBRANE M4 SILICONE, GREY

ART. NO. 400051

### GENERAL



KEOFITT has the widest selection of spare parts and accessories to complete your sampling system



Compatible with all KEOFIT M4 valve heads for silicone & EPDM membrane



The patented membrane design is an essential part of the hygienic design of the KEOFIT sampling valves



It allows for optimal exposure to CIP and SIP media while also integrating the capacity to remove the membrane from the valve body without the use of tools



### FEATURES



Compatible with all KEOFIT M4 valve heads for silicone & EPDM membrane

### CERTIFICATION\*

FDA · USP · EU 1935/2004

### TECHNICAL DATA

Type:	Silicone (QBF-65 - grey)
Hardness (°Sha):	70 ±3
Tensile strength (MPa):	Min. 8,5
Elongation at break (%):	550 ±80
Density (g/cm <sup>3</sup> ):	1,19 ±0,01
Range of temperature in dry atmospheric air (°C/°F):	-60° - +200°C / -140° - +392°
Compression set, DIN 53517, 24h/175°C (%):	Max. 25
Wear resistance:	Less suitable
Tear resistance:	Very good
Resistance to Weather and Ozone:	Excellent
Resistance to Hydrolysis (water and steam):	Good
Resistance to Chemicals (acids/bases):	Suitable
Resistance to mineral oil and gas:	Less suitable
Impermeability to air and gasses:	Not suitable

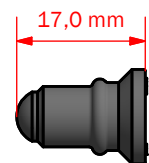
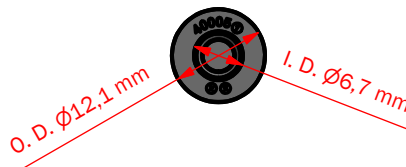
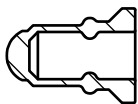
### SERVICE LIFE

Average service life of a Silicone membrane is 2-3 months - actual life expectancy must be experimentally determined by the user.

Temp. max.:	121°C / 250°F
Steam pressure:	0 - 2 bar (g) / 0 - 29 psi (g)
Process pressure:	0 - 6 bar (g) / 0 - 87 psi (g)
CIP:	NaOH or similar
Samplex:	1-5 a day

### Net Weight

· Kg/lbs 0,010 kg / 0,02 lbs



# MEMBRANES M 4

**Silicone**



400051

**EPDM**



400052

**PTFE**



400055

**Part of valve head**

400041	400041E	405541
400042	400042E	405542
400043	400043E	405543
400044	400044E	405544
400047	400047E	405547

**Part of spare part kit**

774041	774041EPDM	774041PTFE
774044	774044EPDM	774044PTFE