

## 10 PACK MEMBRANE I52 EPDM

ART. NO. 320052

### GENERAL



KEOFITT has the widest selection of spare parts and accessories to complete your sampling system



Compatible with all KEOFIT I52 valve heads with silicone & EPDM membrane



The patented membrane design is an essential part of the hygienic design of the KEOFIT sampling valves



It allows for optimal exposure to CIP and SIP media while also integrating the capacity to remove the membrane from the valve body without the use of tools



### FEATURES



Compatible with all KEOFIT I52 valve heads with silicone & EPDM membrane

### CERTIFICATION\*

FDA · USP · EU 1935/2004

### TECHNICAL DATA

Type:	EPDM (EPL-60 - black)
Hardness (°Sha):	61 ±3
Tensile strength (MPa):	Min. 16
Elongation at break (%):	400 ±50
Density (g/cm <sup>3</sup> ):	1,12 ±0,01
Range of temperature in dry atmospheric air (°C/°F):	-40° - +140°C / -40° - +284° F
Compression set, DIN 53517, 24h/175°C (%):	Min. 16
Wear resistance:	Very good
Tear resistance:	Very good
Resistance to weather and ozone:	Excellent
Resistance to hydrolysis (water and steam):	Excellent
Resistance to chemicals (acids/bases):	Very good
Resistance to mineral oil and gas:	Not suitable
Impermeability to air and gasses:	Less suitable

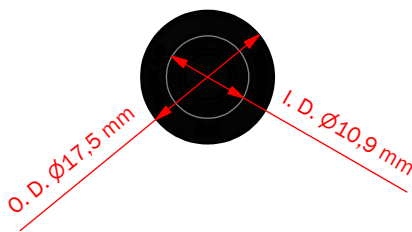
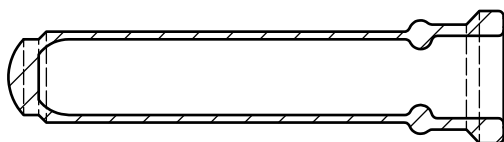
### LIFE TIME

Average life time of an EPDM membrane is 2-3 months - to be determined by user.

SIP/CIP temp. max.:	121°C / 250°F
Steam pressure:	0 - 2 bar (g) / 0 - 29 psi (g)
Process pressure:	0 - 6 bar (g) / 0 - 87 psi (g)
CIP:	NaOH or similar

### Net Weight

· Kg/lbs 0,040 kg / 0,09 lbs



# MEMBRANES INGOLD 52 MM

Silicone	EPDM	PTFE
 320051	 320052	 320055

## Part of valve head

320041	320041E	325541
320043	320043E	325543
320044	320044E	325544

## Part of spare part kit

773241	773241EPDM	773241PTFE
773244	773244EPDM	773244PTFE