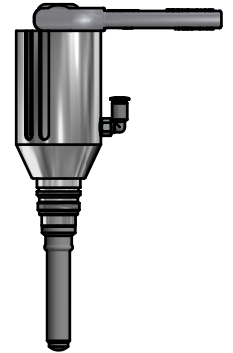


## VALVE HEAD I52 TYPE N (Q)

ART. NO. 320044

### GENERAL

- The KEOFIT CLASSIC "INGOLD" Sampling Valve owes its hygienic design and one-piece construction to the original KEOFIT valve. For 52 MM Ingold ports.
- The product to be sampled should have a maximum viscosity of 0-1.000 cP and should not contain particles larger than 2 mm diameter.
- The valve can be sterilized by means of SIP (EHEDG test) and cleaned by means of CIP (EHEDG certified). Not recommended for autoclave due to plastic parts.
- The sampling valve can be used for any process sampling for microbiological, chemical and/or physical analysis.



### FEATURES

- Installation: 52 mm Ingold port
- Operation: Pneumatically operated/lever handle
- Inlet / Outlet: Depending on choice of valve body
- Membrane: Silicone (QBF-65 - grey)

### CERTIFICATION\*

· Conforms to 3-A · EHEDG CIP · 3.1 Material Certificate · EU 1935/2004

### TECHNICAL DATA

#### Material (product contact)

· Membrane                      Silicone (QBF-65 - grey)

#### Material (without product contact)

· Steel parts                      AISI 303L (1.4305)  
· Steel parts                      AISI 316L (1.4404)  
· Lever handle                    AISI 316 (1.4404)

#### Membrane

· Article                              SILICONE, GREY (# 310051)  
· Certification\*                    FDA · USP · EU 1935/2004

#### Pressure & Temperature

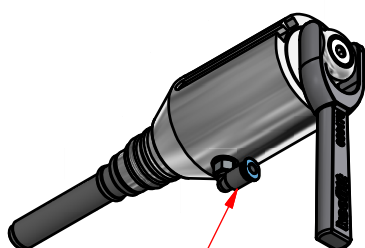
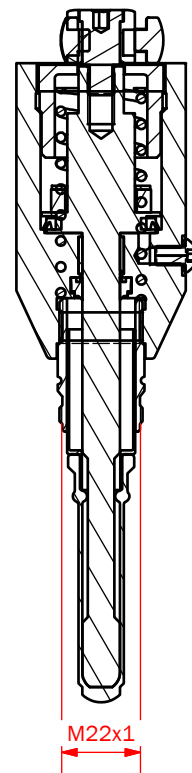
· Pressure                            0 - 6 bar (g) / 0 - 87 psi (g)  
· Temperature                    1 - 130°C / 34 - 266° F  
· Air supply                        4 - 6 bar (g) / 58 - 87 psi (g)

#### Net Weight

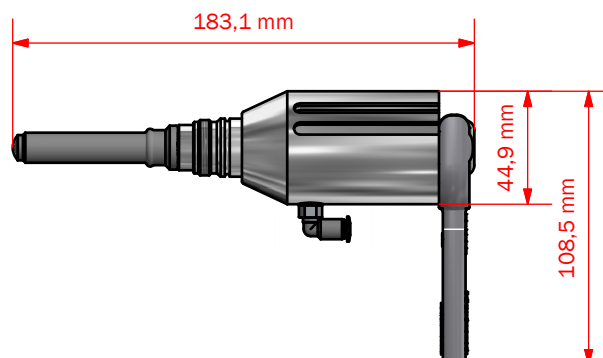
· Kg/lbs                              0.968 kg / 2,14 lbs


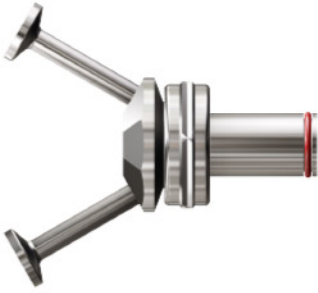
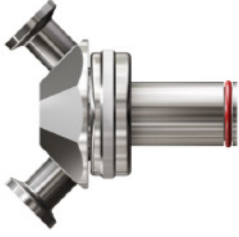
#### Spareparts

773244                              SPARE PARTS FOR I 52 MM HEAD 320044



Festo Fitting QSML-M5-4



	Standard for 40 mm port length	Standard for 52 mm port length	
Hose Piece	<p>Not available</p>	<p>Not available</p>	<p>Not available</p>
Mini Tri-Clamp	<p>310002</p> 	<p>320002</p> 	<p>320005</p> 
Welding liner	<p>On request</p>	<p>On request</p>	<p>320007</p> 