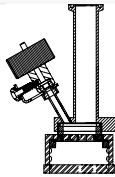
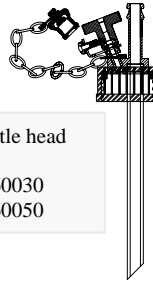


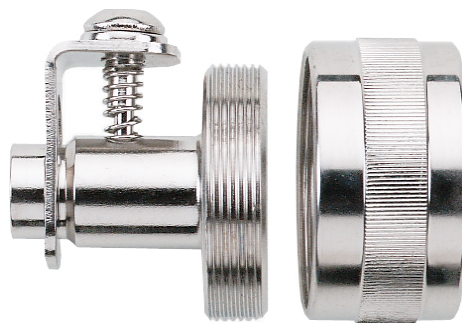
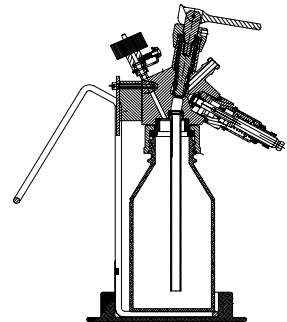
Sampling bottle head W15
Item no.: 860030



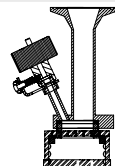
Sampling bottle head
Item no.:
0.5L: 260030
1.0L: 260050



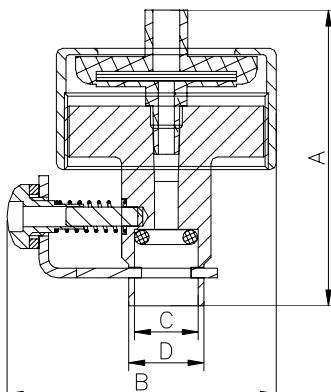
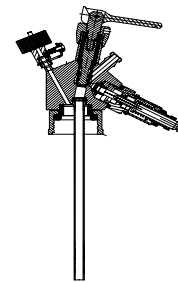
Aseptic system
Item no.:
0.5L: 260000
1.0L: 260010



Sampling bottle head W25
Item no.: 870030



Aseptic system
Item no.:
0.5L: 260003
1.0L: 260001



Where to use :	Aseptic sampling bottle heads	
Material:		
Steel parts:	AISI 316L	(1.4404)
O ring:	Silicone	
Working temperature depends on choice of valve head.		
Connection:	M4 hose piece	
Key measurements		
Drawing part A:	Ø46 mm.	Ø1.81 In.
Drawing part B:	Ø42 mm.	Ø1.65 In.
Drawing part C:	Ø10 mm.	Ø0.39 In.
Drawing part D:	Ø12 mm.	Ø0.47 In.
Net weight:	0.1 kg./pc	0.22 lb
Working Pressure range:	0 - 6 bar(g)	0 - 87 psi(g)