

ADJUSTABLE P.R.V. W9

ART. NO. 850059

GENERAL



KEOFITT has the widest selection of spare parts and accessories to complete your sampling system



Used to accumulate over pressure

FEATURES



Compatible with all KEOFIT sampling valves with W9, Reflex & Simplex hose piece

CERTIFICATION

· O-ring: FDA

TECHNICAL DATA

Material (product contact)

- -

Material (without product contact)

- Steel parts AISI 316L (1.4404)
- O-ring Silicone
- Plug PTFE

Pressure & Temperature

- Pressure 0 - 3 bar (g) / 0 - 44 psi (g)
- Temperature Depending on choice of valve head

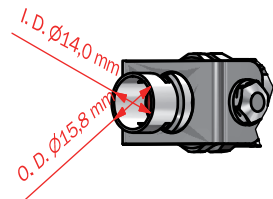
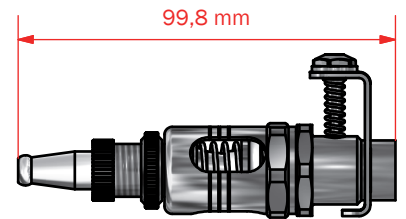
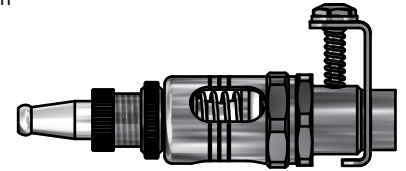
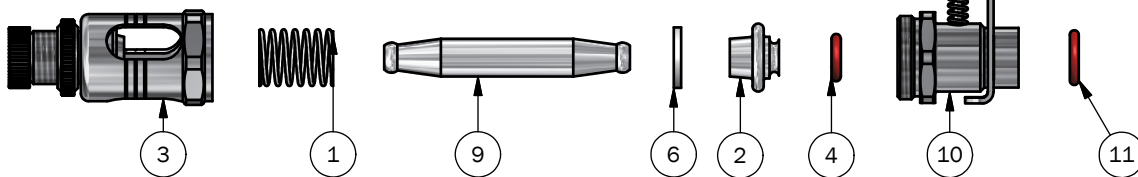
Net Weight

- Kg/lbs 0,180 kg / 0,40 lbs

Spareparts

800830
800859
-
-

O-ring
O-ring



PART LIST

ITEM	QTY	PART NUMBER	TITLE	MATERIAL
3	1	260161	VALVE HOUSE 0-3 BAR	
1	1	900411	SPRING	Aisi 316 L / W. 1.4404
9	1	900165	STEEL ROD FOR 0-3 BAR	Aisi 316 L / W. 1.4404
6	1	900168	RING FOR P.R.V.	Aisi 316 L / W. 1.4404
2	1	900167	PTFE PLUG FOR OLD P.R.V.	PTFE White (TFM 1600)
4	1	800859	10 PACK O-RING 7,5 x 2,5 SILICONE FDA	Silicone (red)
5	1	800480	SPRING FOR QC W9	AISI 316L (W1.4404)
7	1	400831	WASHER FOR QUICK COUPLING M4/W9	Aisi 316 L / W. 1.4404
8	1	800180	SCREW FOR W9 SNAP CLUTCH	AISI 316L (W1.4404)
10	1	800169	UNION NUT FOR P.R.V. WITH QC	AISI 316L (W1.4404)
11	1	800830	10 PACK O-RING 10,3 x 2,4 SILICONE FDA	Silicone (red)
12	1	800181	STEEL ANGLE FOR SNAP CLUTCH	AISI 316L (W1.4404)