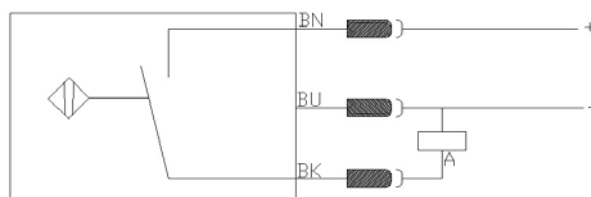
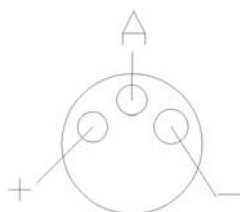
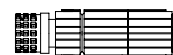
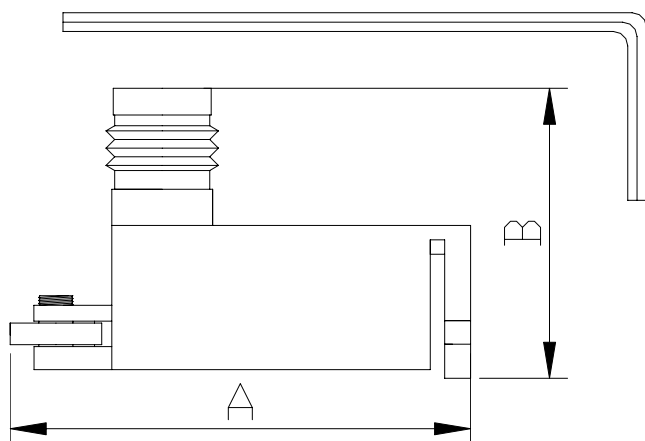
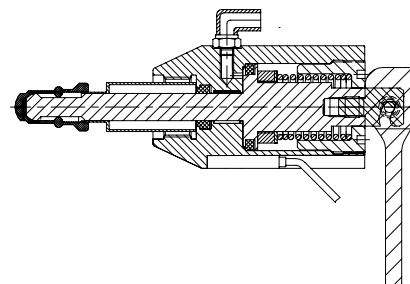


**Proximity switch for W9  
valve head type N**

Plug for Proximity Switch  
Item no.: 600167



Valve head Type N  
Item no.: 600044 /  
855544



19.05.2004

Where to use :	W9 Pneumatically activated valves	
Type:	SME-8C-SQ-LED-24	
Working temperature depends on choice of valve head.		
Working pressure depends on choice of valve head.		
<b>Key measurements</b>		
Drawing part A:	Ø32 mm.	Ø1.26 In.
Drawing part B:	Ø20 mm.	Ø0.79 In.
Max. perm. Switching current (Ohmic load):	500mA	
Max switching capacity:	10W	
Max switching time:	0,5 ms	
Net weight:	0.01 kg./pc	0.02lb